

Galaxy
SUDAN 2016
MY GALAXY



Superlatives are inadequate to describe this boat of truly cosmic proportions. The MY Galaxy is straight out of the top drawer for luxury live aboard diving in the Red Sea, and one of the top vessels in the Dive The World catalogue.

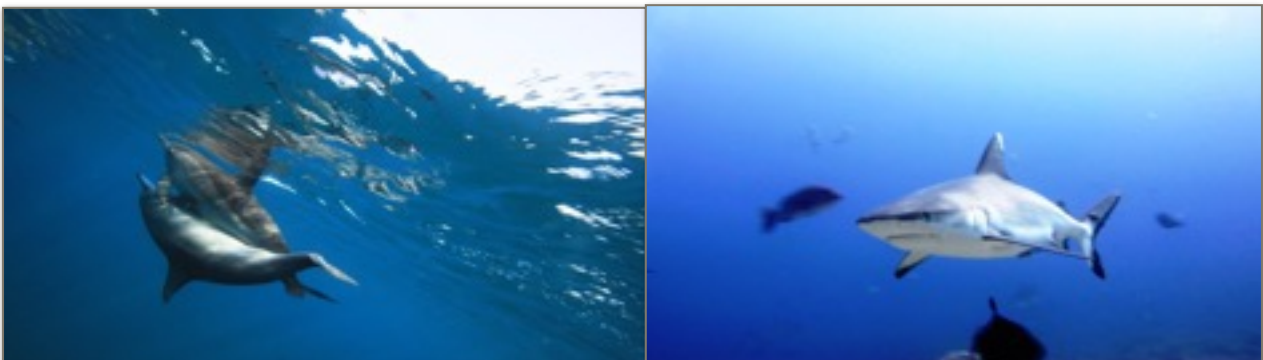
Length: 43 metres / 140 foot

Beam: 9 metres / 28 foot

Cruise: 12 knots

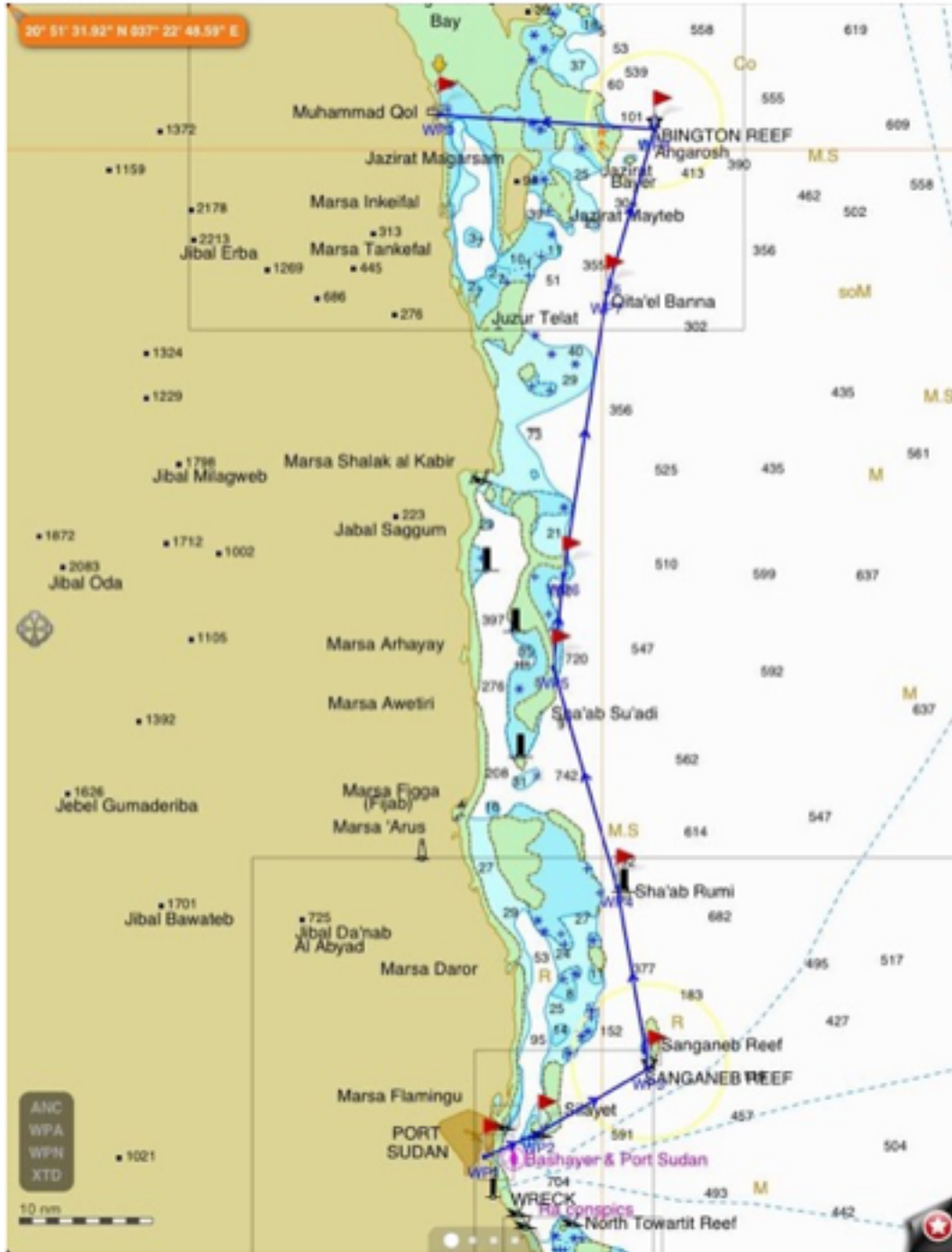
Divers: 22 (max. 24 for whole boat charter)

Built in 2009, this live aboard boat makes use of the latest in marine technology, with twin 1400 HP MTU engines and Super Silent generators.

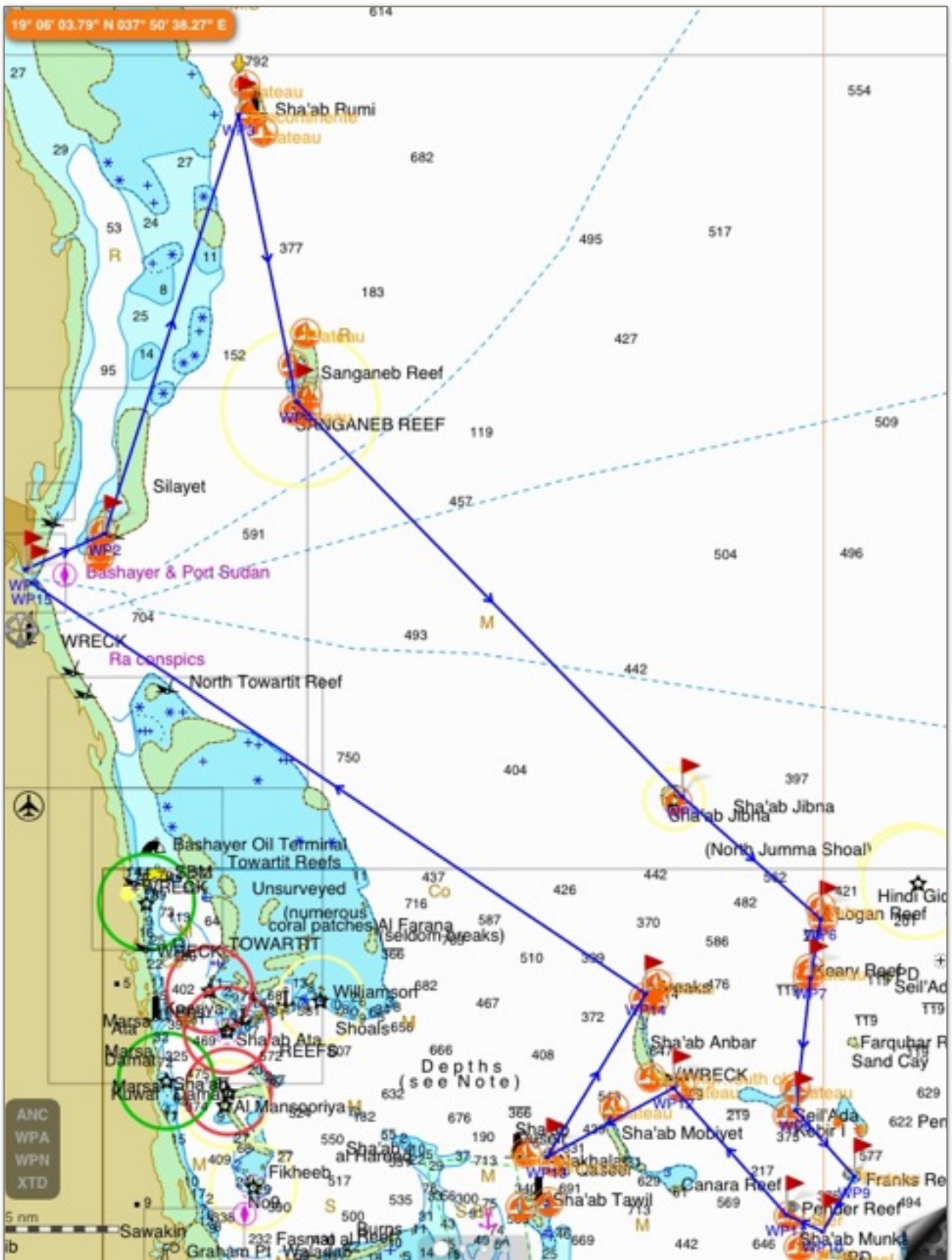


Galaxy

North itinerary



Galaxy South Itinerary



Galaxy



At over 42 meters in length, *Galaxy* oozes space and elegance. The stylish saloon is huge and beautifully fitted with large sea view windows and swish sofa seating to relax with a drink from the bar or espresso machine, or catch a movie on the 42" plasma screen TV. *Galaxy* also allows guests to stay connected with complimentary onboard internet access. There is a dedicated air-conditioned restaurant towards the bow of the main deck. This is the spot on this live aboard where you'll sample fine dining with a touch of class.

The Standard cabins on the lower and upper decks are all bright and spacious with personal unit air-conditioning and private bathrooms. The king-size Royal Suite is immaculately designed, being large enough for 2 sofas and a separate walk-in shower cubicle in its bathroom. It is also equipped with a personal TV and DVD player. There are 2 more king-size Suites on the upper deck with large windows.



Galaxy



Like most scuba divers in the Red Sea, you'll want to make the most of your available time underwater. *MY Galaxy* also takes its guest safety seriously too. That's why everyone gets free use of the ENOS satellite location and rescue system. This means you don't need to be concerned about getting lost at sea - *Galaxy* do this for you!

The *Galaxy's* dive deck and platform will not disappoint you either. There are toilets, hot water showers, and charging points for batteries. 2 large motorized dinghies with experienced guides will whisk you away to all the top Red Sea dive spots.



Galaxy



Cruise price per person includes: Cabin accommodation with air-conditioning, breakfast, lunch, dinner, snacks, coffee, tea and water, , dives (as detailed in the trips above), tanks, weights and weight belts, experienced English-speaking dive master (s), return transfers from Airport .

Optional extras: Scuba equipment , torches, marker devices, alcoholic drinks, visa. Unless otherwise stated, all listed items must be paid on arrival.

How to get there: MY Galaxy departs from Port Sudan and return transfers are included from airports to the departure point. Check-in time starts on the afternoon of the first day before dinner (boat departs next morning). Check out the morning of the last day (last night usually on the boat in the harbour). Late arrivals or early departures can be arranged.

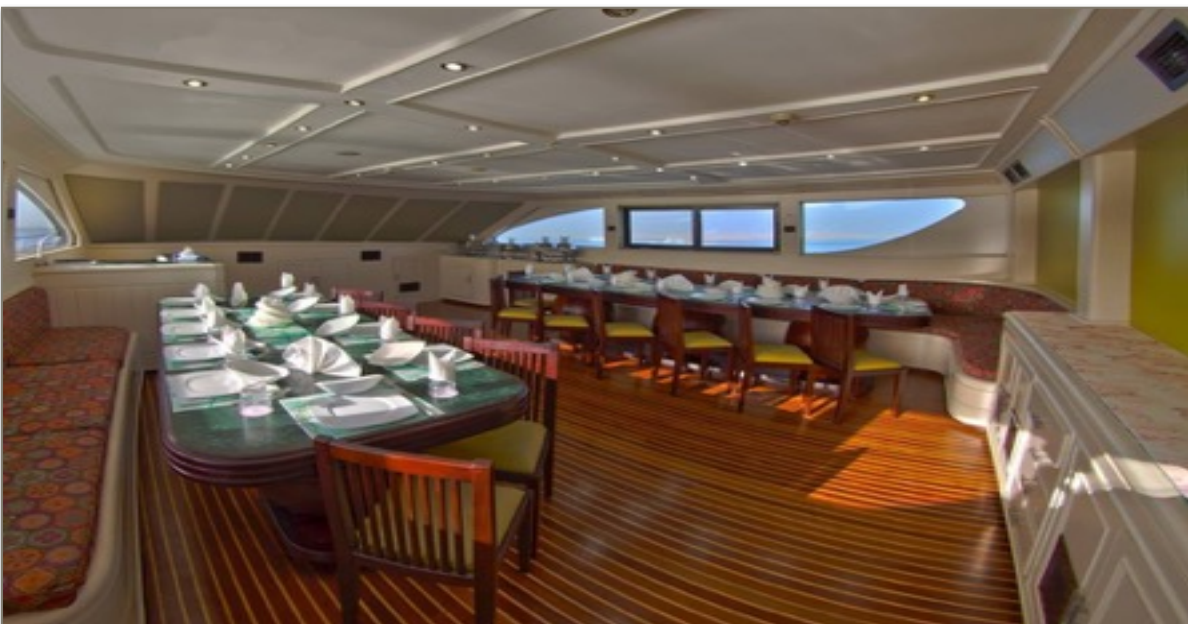
Galaxy



Crew, Facilities, Dive Courses...

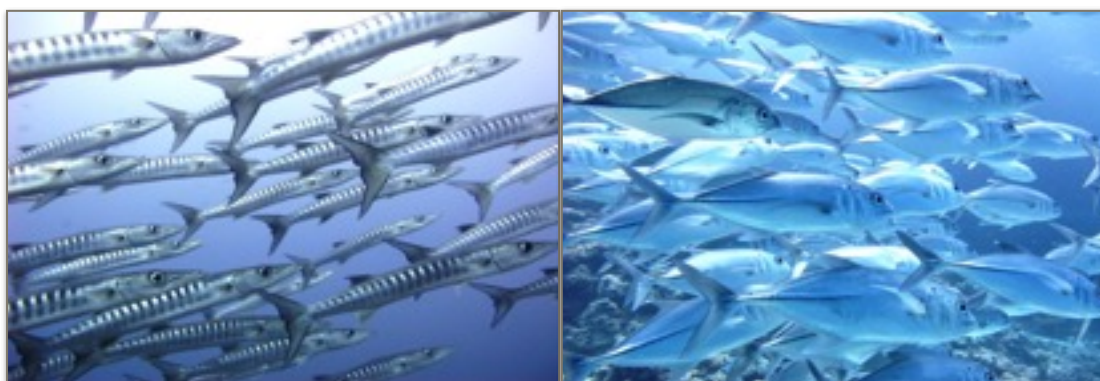
The boat crew comprises:

- 2 Instructors / Dive masters
- Captain
- Chef & Chef's Assistant
- Engineer
- Steward
- Waiter
- 4 Deck Hands



Galaxy

Complimentary nitrox - 2 motorised dinghies - Dive deck & platform with hot showers, toilets, separate rinse tank for cameras and charging points for electrical equipment - Tec diving allowed and equipment for rent - Air-conditioned saloon with well-stocked bar, espresso machine, big-screen TV, DVD and music player - Computer with CD burner - Mobile internet USB sticks available, free of charge - Library with movies, diving magazines, novels & fish ID books - Air-conditioned restaurant - Large open-air shaded area - Shaded flybridge with comfy seating and tables - Teakwood sundeck with mattresses - Water dispenser.



Cabins, Berths, Showers, Bathrooms...

There is 1 king-size Royal Suite on the lower deck with its own TV/DVD player, sofa seating and double portholes for natural light. There are also 2 king-size upper deck Suites with windows. The 10 Standard Cabins are located on the lower and main decks. These all feature windows or twin portholes. All accommodations have private en-suite bathrooms.



Galaxy



All the cabins have:

- Individual control air-conditioning
- En-suite bathroom with hot water shower, shower gel and hand basin
- Windows on upper deck and twin portholes on lower deck
- Royal Suite has TV/DVD player & couches
- Minibar
- Bedding, towels & bathrobes provided
- Bedside cabinet, hairdryer & mirror
- Reading lights
- Wardrobe & shelves
- 24-hour, 220v electricity supply
- Fire warning system
- Life jackets & fire extinguisher

No. of bathrooms / showers - 15 / 15 - hot water

Menu, Cuisine Type...



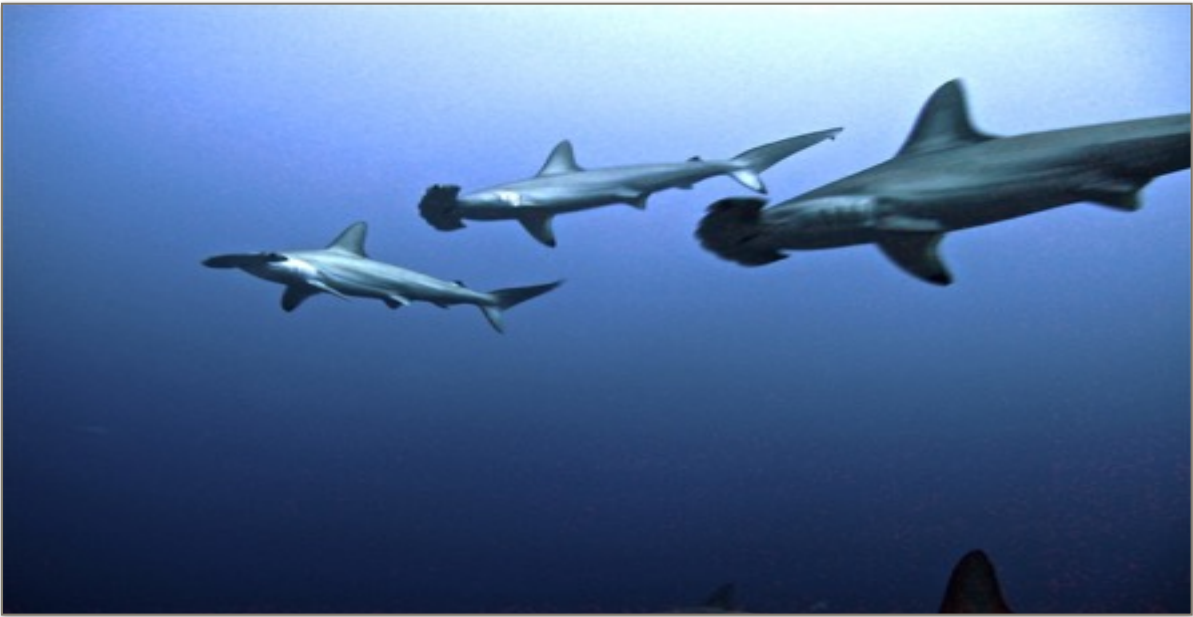
Galaxy



International cuisine and local delicacies are flavour of the day onboard Galaxy, served buffet style in the air-conditioned restaurant.

- **Main meals comprise pre-breakfast, breakfast, lunch, dinner and snacks.**
- **A typical meal consists of soup, meats / fish, pasta, salads, potatoes and rice.**
- **Bar snacks , biscuits, cakes and fruit are available all day long.**
- **Tea, coffee, , drinking water are all complimentary.**
- **Beer, wine, spirits and espresso are available for purchase onboard.**
- **Vegetarian and other special diets can be catered for with prior notice.**
- **Catering begins on guest arrival.**

Galaxy



Technical Specifications...

- Built in 2009
- Size - 42.5m x 8.6m
- Top speed - 15 knots
- Cruising speed - 12 knots
- 2 x 1400 HP MTU engines
- 2 x 84 KW CAT Super Silent generators
- 2 x L&W dive tank compressors
- Membrane enriched air nitrox system
- 12 & 15 litre aluminium tanks with DIN fittings and international inserts
- Electricity 220v - 24-hours per day
- Water capacity - 16,000 litres
- Fuel capacity - 18,000 litres
- Freshwater maker - 9,600 litres per day

Galaxy